

Super for Sectors

iBridge A5c Connectorized Point-to-Multipoint Access Point

With the fastest client speeds and great access point capacity, along with local and network-wide spectrum reuse, the connectorized iBridge A5c delivers the highest possible scale for any unlicensed fixed wireless network. It is well suited for long-range pole and tower multipoint applications, access point collocation (GPS Sync) and Municipal and Rural Licensed Public Safety multipoint (4.9 GHz).

Increased Capacity at Each Site

With integrated, high-precision GPS Sync technology, new iBridge A5c sectors can easily be added at existing iBridge A5 and B5 sites and reuse the same channel. This saves valuable, scarce unlicensed spectrum resources when new iBridge A5c devices are installed "back-to-back" on the same tower or pole.

Ultra-High Client Capacity

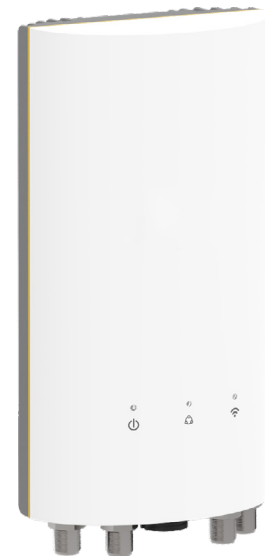
TDMA techniques provide significant improvements when scaling the number of clients. By dynamically allocating upstream time slots upon client request, network scale, spectrum efficiency and access point utilization are optimized to the highest degree possible.

Ultra Rugged

Carrier-grade IP67 design allows the iBridge A5c to withstand the harshest of environmental conditions.

Network Scalability Perfected

Every deployed device is collaboratively synchronized across the network. This allows easy channel reuse to save valuable spectrum network-wide. Connected to Netspan, deployment of the iBridge A5c is incredibly simple with network spectrum use and performance optimized across all of your deployed devices.



Need more information? Get in touch with the Airspan sales team by visiting airspan.com/contact.