

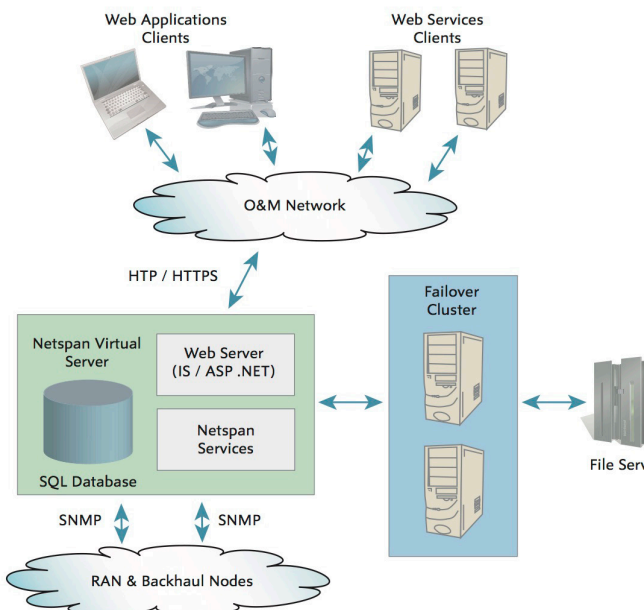
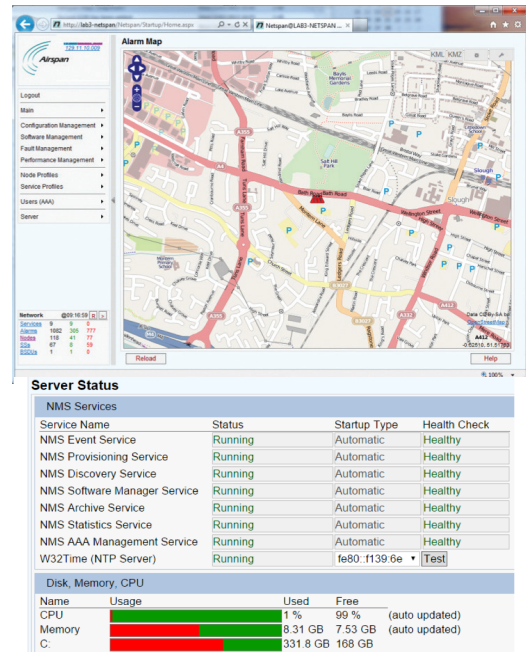
Netspan

Netspan is Airspan's management solution that manages its network elements in the RAN (4G & 5G) and Backhaul product lines. Based on client-server application, it provides an always-on service running on a Windows based environment with front-end web application.

Netspan uses SNMP to communicate with the network elements over its southbound interface. Its northbound interface is based on standards based SOAP protocol that is easy to integrate with any customers Operational Support Systems (OSS). Designed to accommodate customer requirements through its flexible configuration and architectural options, it can be deployed in a virtualised environment to support high availability and scalability, with an option for seamless failover if any node fails.

Netspan provides a fully flexible Web GUI, which can be customised to provide different options for each Netspan operator. It also allows configurable access rights to be defined, allowing each operator of the EMS to be granted the rights appropriate to their function.

Netspan provides configuration and diagnostic access to each network element, and can identify the network topology & geographical location to correlate alarms / events between RAN & Backhaul networks.



Netspan enables the integration of backhaul and access technologies within a single EMS, redefining the way in which networks can be managed and rolled out.



Specification Summary

Standard Platform Requirements

CPU	1 x Quadcore Processor
CPU with AES-NI	Mandatory
RAM	16GB RAM
Hard Drive	Disk Redundancy (such as RAID 1 or 5) 120GB Free
Scalability	1000 eNodeBs & iRelay or 1000 iBridge bases

Advanced Platform Requirements

CPU	2 x 10 Core Processor
CPU with AES-NI	Mandatory
RAM	128GB RAM
Hard Drive	Disk Redundancy (such as RAID 5) 600GB Free
Scalability	2000 eNodeBs & iRelay oOr 20000 iBridge bases



Communications & Networking

Northbound Interface	SOAP, SNMP, FTP/SFTP
Database	SQL
Equipment Management	SNMP, FTP/SFTP
Client/Server Communications	HTTP/HTTPS

Software Management

Software Download for all Elements, Software Version Reporting, Scheduling of Software Download Network-Wide Software Management

Performance Management

On-Demand Measurements, Historical Storage / Logging of Statistics / KPIs, Graphical View of Statistics / KPIs, Export of Statistics / KPIs

Security Management

Password & Security Policy Management, Encrypted Password Storage, Form-based Authentication, Role-based Authentication, User Activity Logging

Database Management

Management of Fault & Event Storage, Database Integrity Checks, Integrated Database Administration Scheduled Backups

Administration

Server Monitoring, Netspan Application Monitoring, SQL Database Management, Upgrade Status & History, Software Version of Server, OS & Netspan, License Management, User defined Screen Layout