



Airspan Networks AS40x0 Products

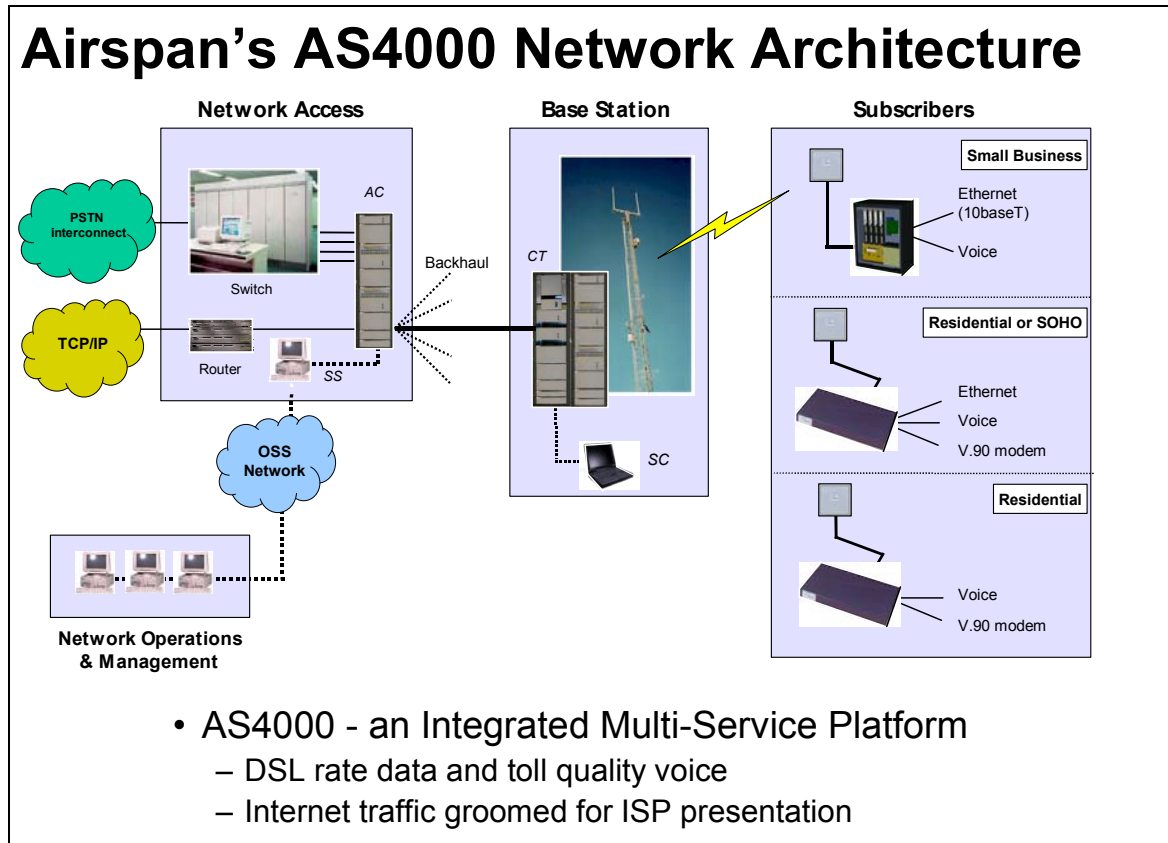
AS4000 Wireless DSL Systems

Airspan's flagship product, the AS4000 wireless DSL system, is a high-capacity, point-to-multipoint radio Broadband Wireless Fixed Access system, based on optimized broadband DS-CDMA technology, and delivering a wide range of services including; high-speed, packet-oriented IP interfaces for always-on high-speed Internet connections, leased line data, premium telephony, and ISDN links.

AS4000 Wireless DSL systems provide connectivity in the widest possible range of challenging environments from urban to rural deployments and covering areas with dense vegetation. The radio range is one of the best in the industry with frequency bands from 900 MHz to 4GHz and a link radius of up to 25km. This enables operators to offer a range of premium services to businesses and residential customers where copper is unsuitable, not available or expensive to lease.

The modular system is highly scalable and allows for rapid construction and expansion of networks from a portfolio of:

- ***Central Terminals (Radio Base stations)*** Providing the radio coverage footprint for deployment of Subscriber Terminals
- ***Access Concentrators*** Providing flexible interfacing to host switching and data networks
- ***Subscriber Terminals*** A wide variety of units offering a range of services including IP Internet access at speeds up to 512kbit/s today (and multi-megabit speeds with the AS4020 platform – see below), POTS (1- 2- 4- 8- and 16-line), data (leased lines to 128kbit/s), ISDN and other multi-line multi-service products.



To plan and manage the AS4000 network deployments, Airspan provides a range of additional products:

AS8100 Sitespan - Network Management System

For configuration, alarm, test and performance information on the AS4000 wireless DSL system.

AS7010 STMeter

A handheld subscriber terminal installation tool, providing readouts of signal strength and link quality. Use of this tool enables a single installer to optimize the subscriber set-up and minimizes the installation time required.

AS7020 STMon – Subscriber Terminal Commissioning and test software

A software tool that can be used by either skilled or un-skilled operatives to assist in deployment optimization and debugging of subscriber terminal equipment.



AS9000 Airplan – Radio Planning software

A sophisticated software system for predicting coverage and performance of AS4000/AS4020 wireless DSL systems.

New Products

In line with Airspan's aggressive development programs, a number of new products will be launched during 2003

These include the following:

AS4020 – Enhanced IP data and voice platform

The AS4020 base station enhancements share the same architecture as the current AS4000 product, and subscriber units will operate on either platform. AS4020 can be deployed as a simple upgrade to existing AS4000 networks, as an overlay, or as an independent network.

AS4020 introduces important performance-enhancing technologies: intelligent real-time adaptation of the radio interface to deliver very high spectral efficiency, and a patented transport mode optimized for high efficiency IP data transmission.

With these enhancements, AS4020 can deliver more than 22Mbit/s throughput per radio frequency channel and base station capacity in excess of 100Mbit/s. Individual subscribers will be able to terminate up to 2Mbit/s IP data.

For Operators wishing to deploy the highest speed data services together with the highest quality voice circuits, AS4020 will be the platform of choice.

AS8200 Netspan – Enhanced Management system

Airspan has announced the introduction of an enhanced Element/Network Management system – AS8200 Netspan.

This will be introduced alongside AS4020 and provide benefits for existing AS4000 customers and for new customer alike.

Key features for AS8200 will be

- industry standard SQL data structures to allow for customized interaction and integration with other operator management systems,
- multiple security levels,



PRODUCT FACT SHEET
April 2003

- multiple user profiles
- web-based clients for remote system management and ease of operation
- scalable to 500,000 subscriber lines

AS9020 Airplan

To take account of the enhanced features in AS4020, including dynamic m-QAM modulation states, Airspan will be introducing an enhanced radio-planning tool. This will allow accurate modeling of AS4000/AS4020 deployments, including prediction of service levels over the entire coverage area. Results from AS9020 will be able to be linked to the management system to provide an operator with the easiest path to determine achievable service levels for new and existing subscribers.